

NEW

**HITACHI**  
Inspire the Next

Coding & Marking Solutions  
**Software Suite**

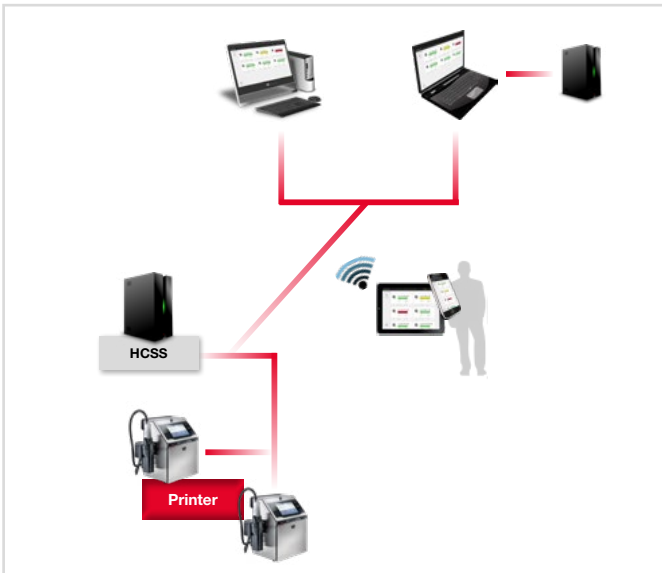


# Coding Software Suite

As the core of Hitachi Coding & Marking Solutions, Coding Software Suite (HCSS) from Hitachi has a client/server architecture with flexible web browser based user interface for operators to design labels or codes, manage and monitor printers individually or in groups.

## Client Server Web Based

Install once, access anywhere via web browser on PC, tablet or smartphone.



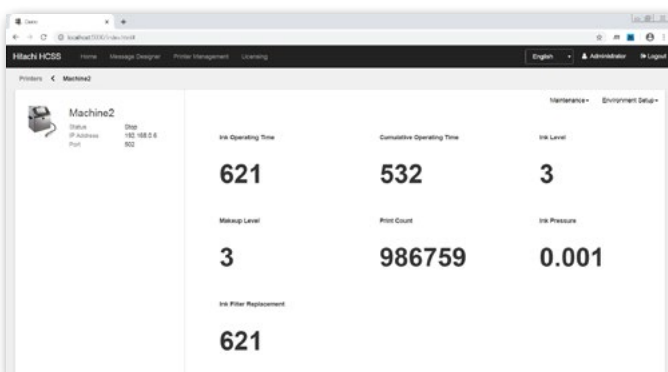
## Message Designer

Powerful WYSIWYG (what you see is what you get) message designer for Hitachi Continuous Inkjet printers.



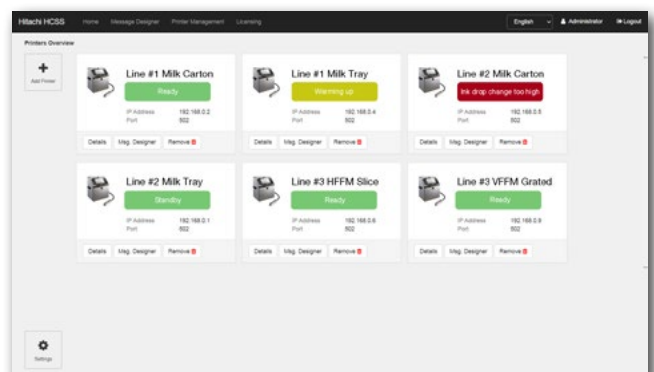
## Printer Monitor

Monitor status of all networked printers in one aggregated view or individual printers in detail.



## Printer Grouping

Manage and control devices in groups.



## Message Designer

### User-friendly HMI allows users to manage:

- **Message style**
  - Individual
  - free layout
- **Print format**
  - Set number of lines
  - Add/remove columns
  - Bold, DM, Inter-Character and line spaces
- **Print specification**
  - Character height
  - Ink drop use
  - Character width and orientation
  - Print start delay
  - Product speed matching
  - Speed and fine control compensation
  - Encoder pulse rate division factor
  - Line speed
  - Print distance (Head to target)
  - Print target width
  - Actual print width
  - Repeat count and intervals
  - Target sensor timer and filter
  - Ink drop charge rule
- **Calendar and count condition**

### Create the message with all required contents, e.g:

- Alphanumeric
- Calendar
- Counter
- Time counter
- Shift code
- Logo (\*jpg and \*bmp) elements.
- GS1 compliant 1D and 2D codes.

Powerful message management and control can transfer the created message between the file system and the printer or printers groups. WYSIWYG message preview and listing.

## Printer Management

- **Printer registration management** - add/remove printers or printer groups
- **Printer grouping management** – create and edit printer group
- Send and print message to group printers simultaneously

### Dashboard with real time status of printers or printer groups:

- Ink operating time
- Ink (remaining) level
- Makeup (remaining) level
- Ink pressure
- Ink replacement warning
- Print count
- Maintenance and Environment information

Individual and grouped printers overview on a single screen.

## Technical Specification

### System requirements:

- Installation requires admin rights
- 512 MB RAM or higher
- Windows 10 64-bit OS
- 1 GB disk space (for large number of messages, additional disk space might needed)
- Installer manages all other prerequisites
- Recommend browser: Chrome

GS1 compliant 1D and 2D codes.

### Languages:

English, Japanese, Simplified and Traditional Chinese, Spanish, French, German, Portuguese

### Printer support:

RX-D/RX2-D (Modbus/TCP), UX Series

## Head Office

---

### Japan

Hitachi Industrial Equipment Systems Co., Ltd.  
Phone: +81 3 4345 6000  
[www.hitachi-ies.co.jp](http://www.hitachi-ies.co.jp)  
[info@hitachicoding.com](mailto:info@hitachicoding.com)

## Sales Offices

---

### America

Hitachi America, Ltd.  
Phone: +1 866 583 0048  
[www.hitachi-america.us/ijp](http://www.hitachi-america.us/ijp)  
[Inkjet-printers@hal.hitachi.com](mailto:Inkjet-printers@hal.hitachi.com)

### Asia

Hitachi Asia Ltd.  
Phone: +65 6305 7400  
[www.hitachi.com.sg/ice](http://www.hitachi.com.sg/ice)

### China

Hitachi Industrial Equipment Systems (China) Co., Ltd.  
Phone: +86 21 5489 2378  
[www.hitachi-iec.cn](http://www.hitachi-iec.cn)

### Europe

Hitachi Europe GmbH  
Phone: +49 211 5283 0  
[www.hitachi-industrial.eu](http://www.hitachi-industrial.eu)  
[info@hitachicoding.com](mailto:info@hitachicoding.com)

### Oceania

Hitachi Australia Pty Ltd.  
Phone: +61 2 9888 4100  
[www.hitachi.com.au/products](http://www.hitachi.com.au/products)

Follow us:



DB-Software Suite-07/20-EN

All company and product names in this brochure are the property of the respective companies.